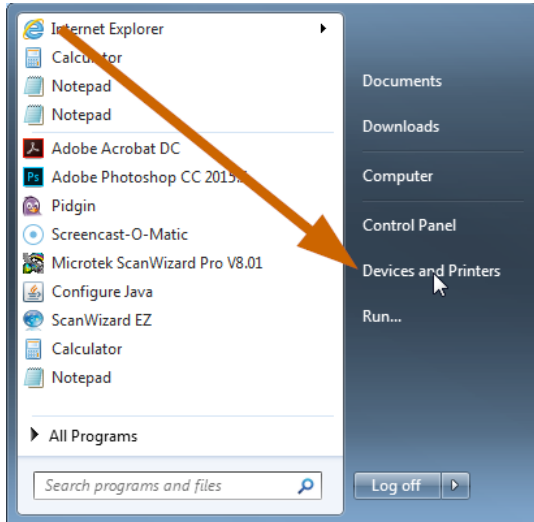
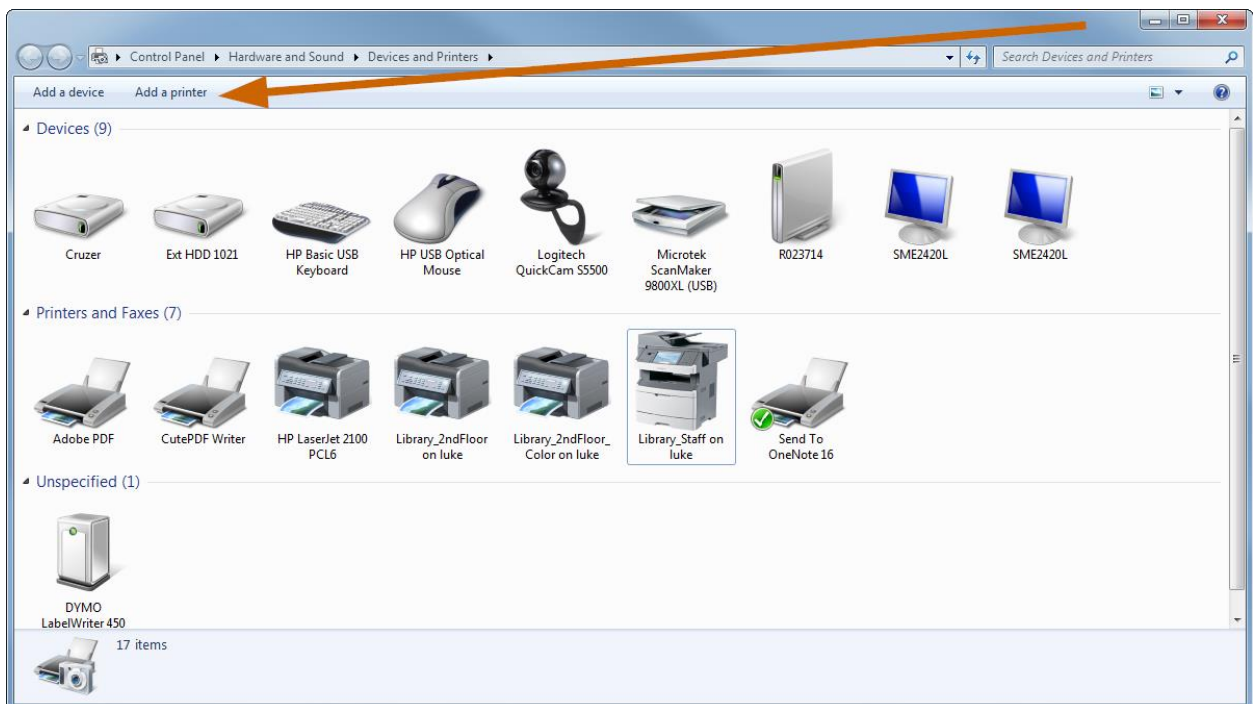


Connecting to Printers in DeWitt Library from Windows Computers

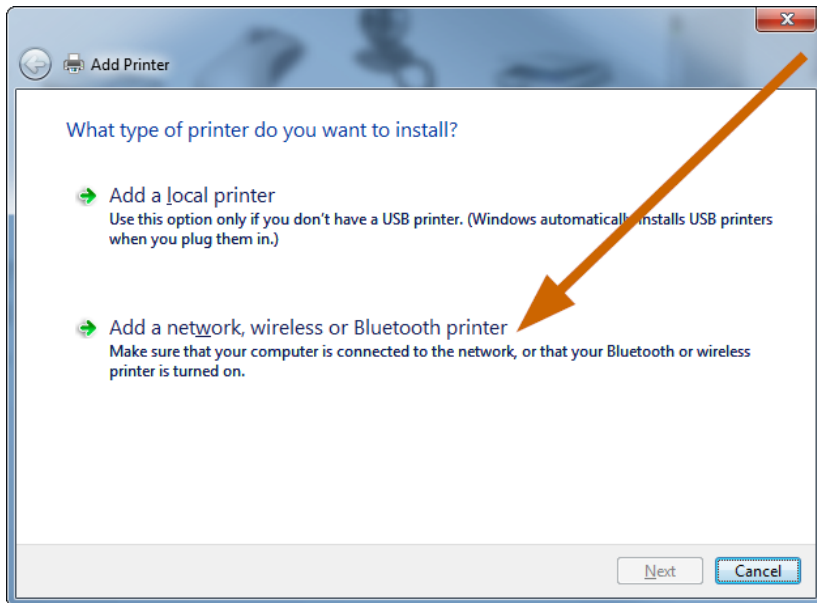
1. From the Start menu, select Devices and Printers. (Alternatively, go to Printers via the Control Panel.)



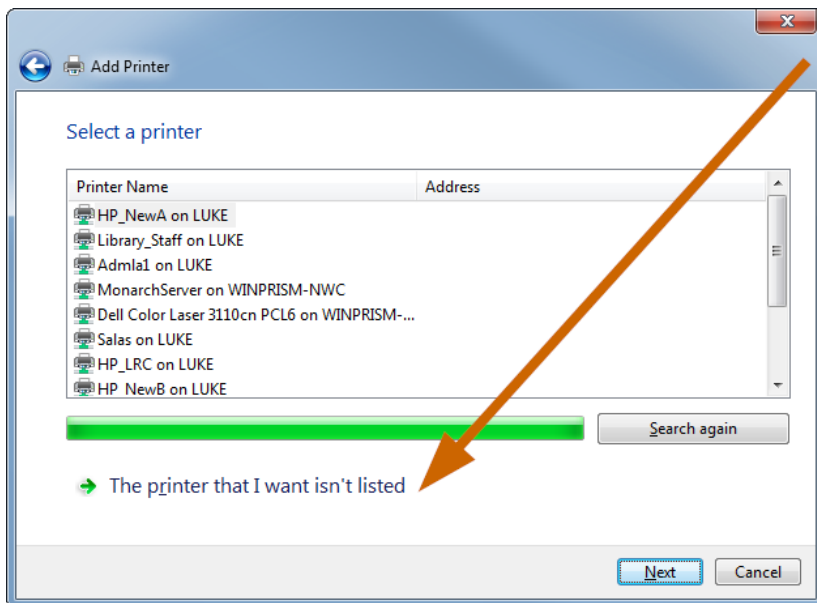
2. Click Add a printer.



3. Select Add a network, wireless or Bluetooth printer, then click the Next button.



4. In the Select a printer screen, click The printer that I want isn't listed, then click the Next button.



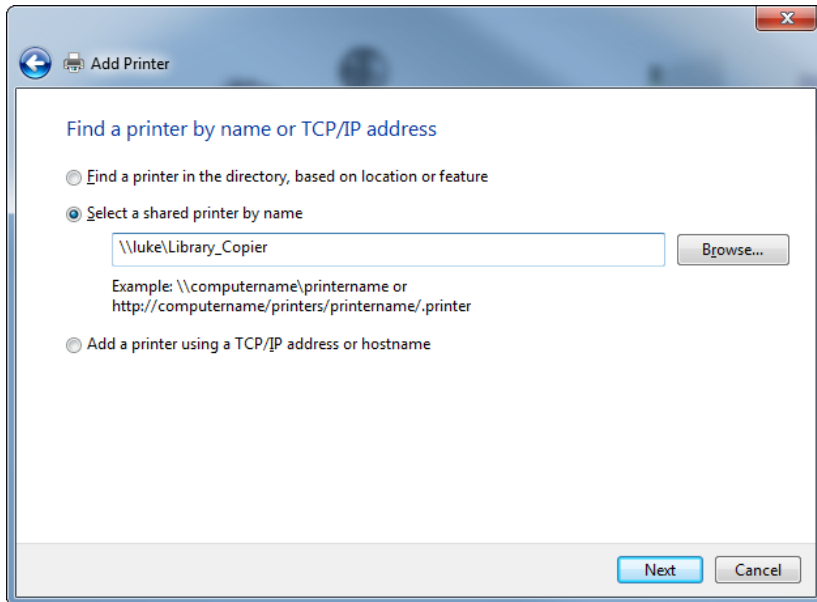
5. Select the radio button by Select a shared printer by name. In the field, enter one of the following depending on what printer you wish to install:

\\luke\Library_Copier -- located on the 1st floor, black /white or color, 1- or 2-sided

\\luke\Library_2ndFloor -- located on the 2nd floor, black / white only, 1- or 2-sided

\\luke\Library_2ndFloor_Color -- located on the 2nd floor, color only, 1 sided only

When finished, click the Next button.



6. A window will appear, showing the status of the installation. When finished, you will see a confirmation screen. You should be all set to print!

